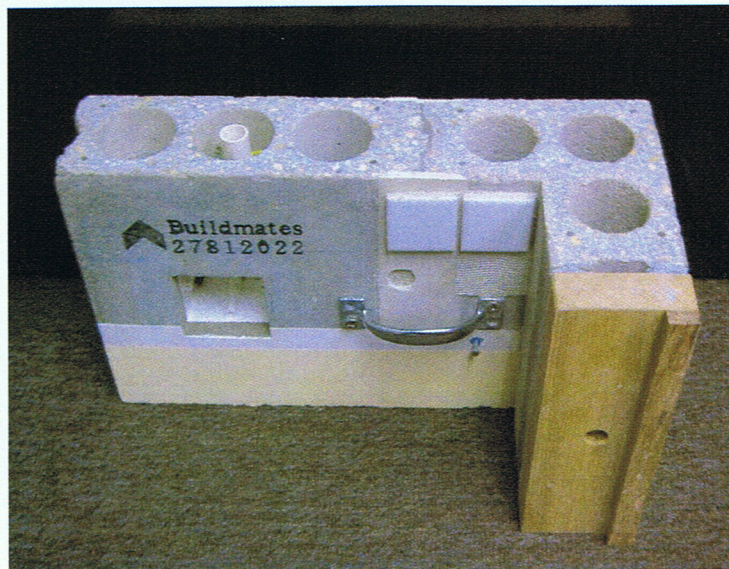




Buildmates Wall (Brief)



BUILD MATES BUILDING TECHNOLOGY LTD

Tel : (852) 2781 2022

Fax : (852) 2781 2251
2009

www.buildmates.com



Contents

• Buildmates Wall (Brief)	...	S.1
• Contents	...	S.2
A. The Introduction of the Product	...	S.3
B. Historical Background	...	S.10
C. Planning & Drawings	...	S.18
D. Precast & Pre-installed Conduits	...	S.21
E. Installation & Fixings	...	S.29
F. Technical Features and Advantages	...	S.53
G. Brief Summarization for Buildmates Wall	...	S.58



A. The Introduction of the Product

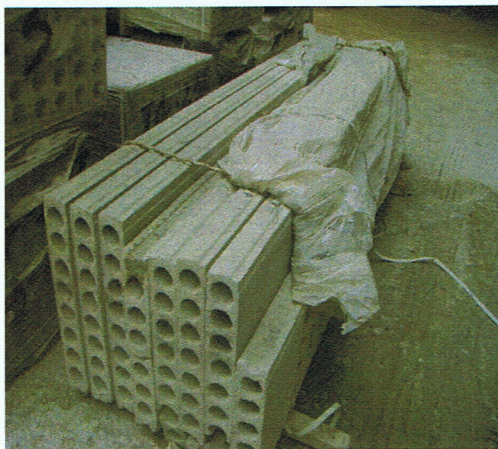
A.1 What is Buildmates Wall ?

A.1.1 Partition Wall constructed by the use of Custom- made Buildmates Panels and associated Buildmates jointing / fixing accessories.

A.1.2 Buildmates Panels designed with tubular voids and made from reinforced concrete in the compressive strength of 20 MPa and formed with vertical mould.

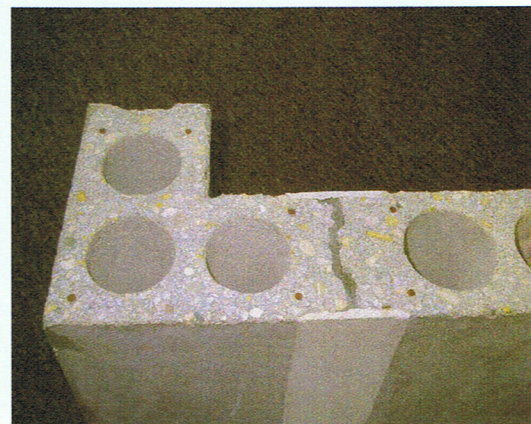


A.2 Panel Profile and Section



Buildmates Panel Profile

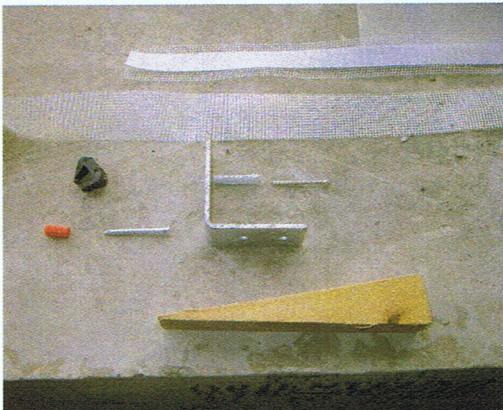
Buildmates Panel Section






A.3 Accessories and Completed Installation

Buildmates Accessories



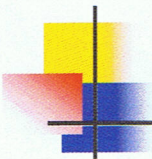
**Completed
Installation**



A.4 Sizes of Wall Panels Suitable for Site Installation (2 workers / gang)

Thickness (mm)	75	85	100	120	150
Nominal Width (mm)	600	600	600	600	600
Effective Width (mm)	595	595	595	595	595
Length	To fit the ceiling height				
Max. Wall Height (mm)	3350	3150	3150	2850	2650

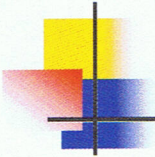
Thickness of wall subject to the client's requirements for acoustical performance and fire resistance period.



A.5 Acoustical Performance

Test to be conducted in accordance with BS5821: 1984, the weighted sound reduction index as follows:

Thickness (mm)	75	85	100	120	150	100 with grouted hollow cores	120 with grouted hollow cores	150 with grouted hollow cores	170 Double layers of 75 with grouted hollow cores and in-filled with glass fibre felt between panels
Sound Reduction (dB)	42	43	45	46	47	48	50	51	55



A.6 Fire Resistance

BS476: Part 2

Wall Thickness (mm)	75	85	100	120	150	100 with grouted hollow cores	120 with grouted hollow cores	150 with grouted hollow cores
Integrity (hr)	2.00	2.40	3.20	3.60	4.00	4.80	5.60	6.40
Insulation (hr)	1.25	1.5	2.00	2.25	2.50	3.00	3.50	4.00